



### Sennheiser Documentation App



or online at [www.sennheiser.com/download](http://www.sennheiser.com/download)  
evolution wired\_



# e 914

#### Quick Guide

Kurzanleitung  
Guide rapide  
Guida rapida  
Guía de inicio rápido  
Guia rápido  
Beknopte handleiding  
Krótka instrukcja obsługi  
Snabbguide

#### Kvikstartguide

Pikaohje  
Γρήγορος οδηγός  
Kısa Kılavuz  
Краткая инструкция  
快速指南  
快速使用指南  
クイックガイド  
퀵 가이드

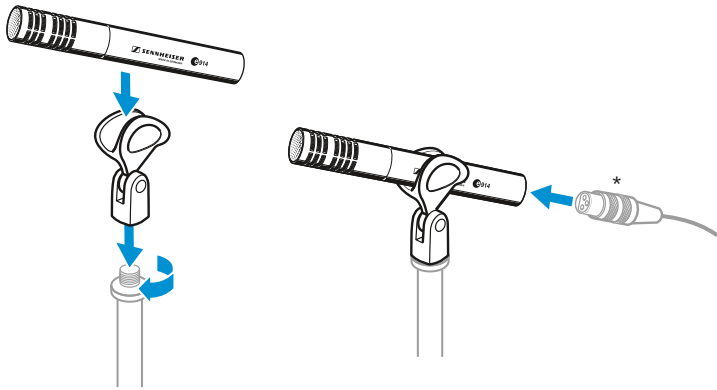
Sennheiser electronic GmbH & Co. KG

Am Labor 1, 30900 Wedemark, Germany  
[www.sennheiser.com](http://www.sennheiser.com)

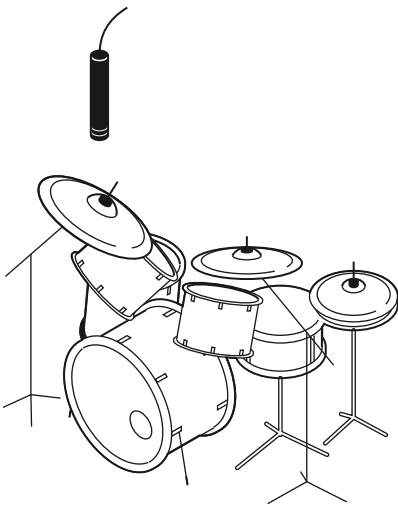
Printed in Germany  
Publ. 07/18, 581337/A01

## SENNHEISER

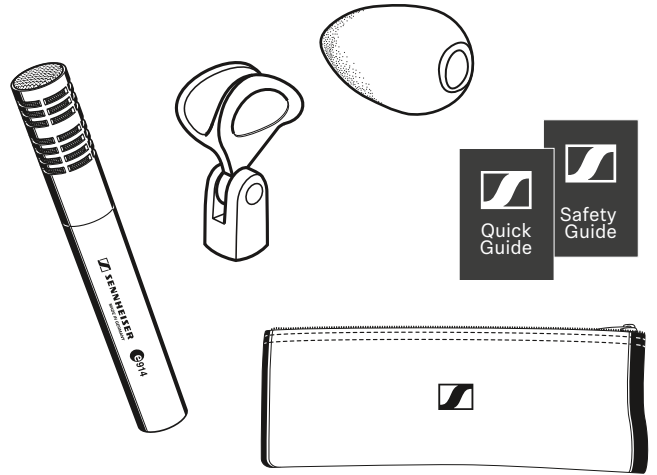
### Setup



\*XLR-3 cable not included

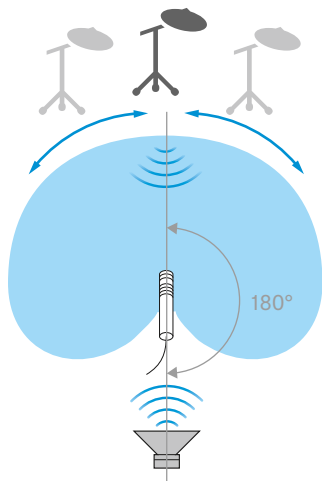
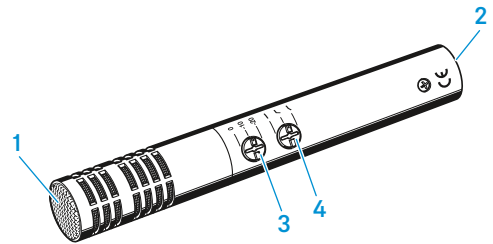


### In the box

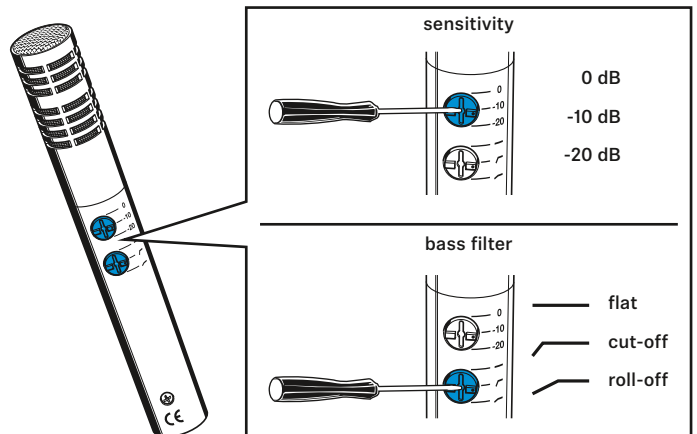


### Overview

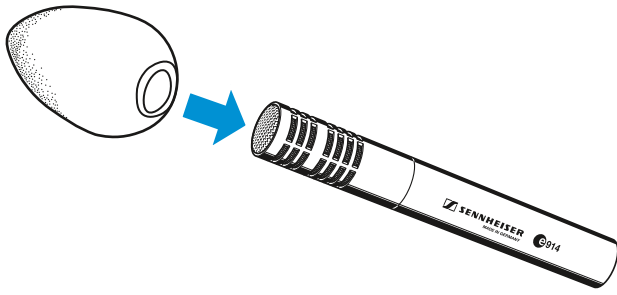
- 1 Sound inlet basket
- 2 XLR-3 connector
- 3 Adjusting
- 4 Adjusting the bass filter



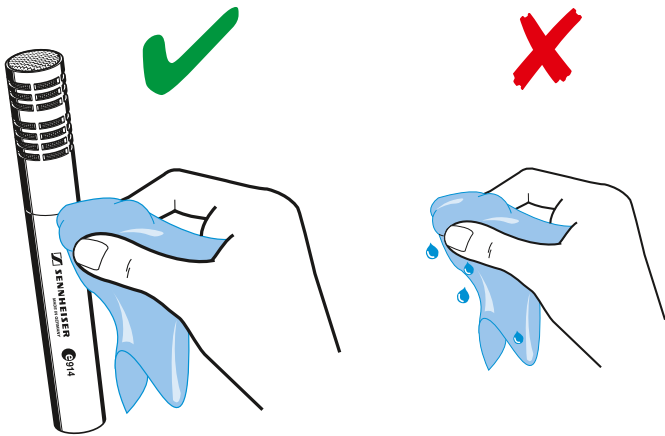
### Adjusting



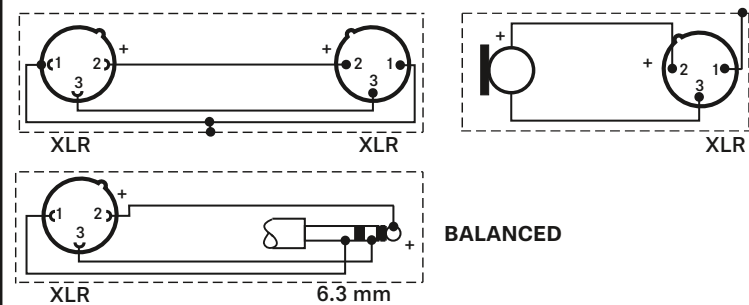
### Using the windshield



### Cleaning



### Connector assignment



### Specifications

Transducer principle	pre-polarized condenser microphone
Frequency response	20 - 20,000 Hz
Pick-up pattern	cardioid
Sensitivity (free field, at 1 kHz)	7 mV/Pa
with pre-attenuation	2.3 mV/Pa / 0.7 mV/Pa
Nominal impedance (at 1 kHz)	100 Ω
Min. terminating impedance	1 kΩ
Max. sound pressure level (at 1 kHz)	137/147/157 dB SPL (depending on pre-attenuation)
Equivalent noise level	
A-weighted (DIN IEC 651)	19 dB
CCIR-weighted (CCIR 468-3)	30 dB
Pre-attenuation	0 dB, -10 dB, -20 dB

Bass filter	linear roll-off 130 Hz, 6 dB/oct. cut-off 85 Hz, 18 dB/oct.
Phantom powering	48 V / 2.2 mA
Connector	XLR-3
Dimensions	∅ 24 x 157 mm
Weight	198 g

### Polar pattern and frequency response

