



## Surround Dongle for Sennheiser Gaming headsets Quick Guide

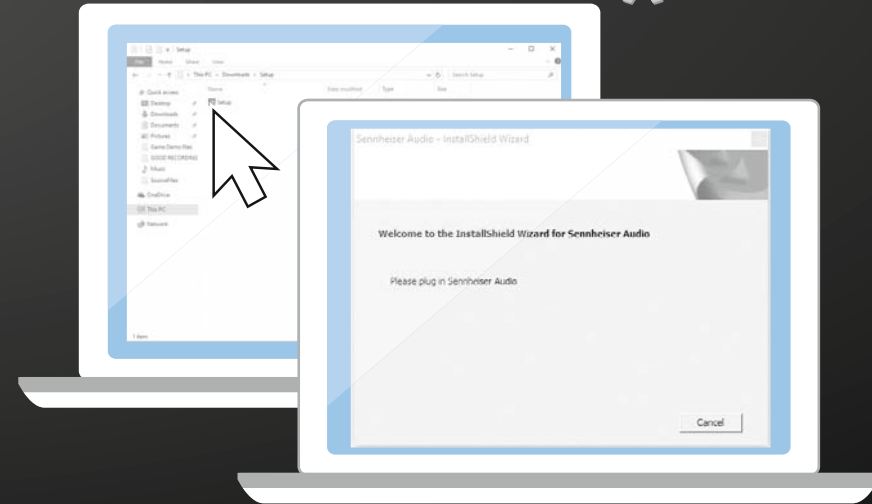


### 1 Download newest driver



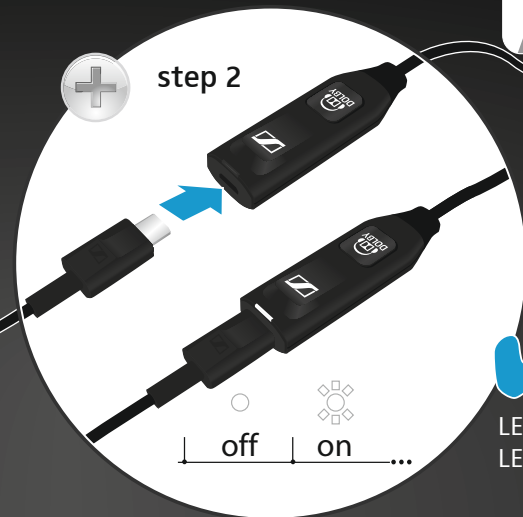
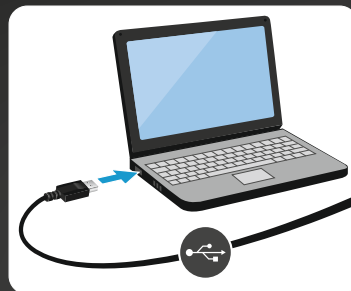
Please visit our website  
and download the newest driver  
[www.sennheiser.com/gaming-downloads](http://www.sennheiser.com/gaming-downloads)

### 2 Open setup file



- 1. Double click the setup file.
- 2. Follow the instructions.

### 3 Connect to a headset and a computer



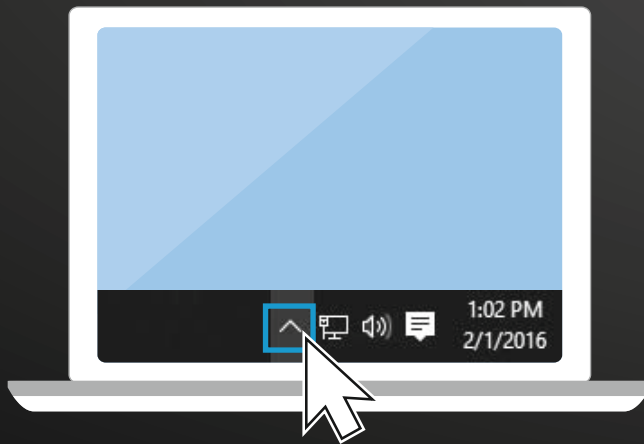
LED white: surround sound ON  
LED red: surround sound OFF

[www.sennheiser.com/gaming-downloads](http://www.sennheiser.com/gaming-downloads)

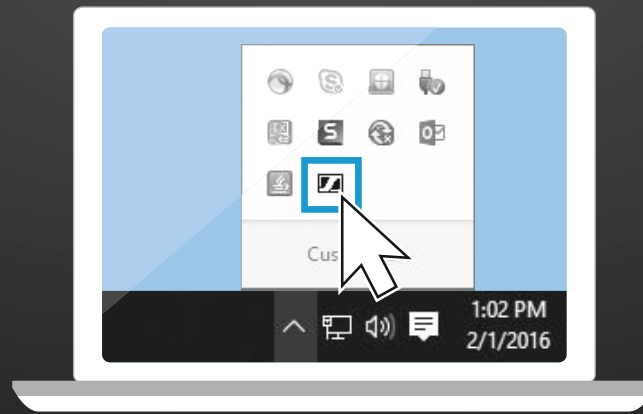
Sennheiser Communications A/S  
Industriparken 27, DK-2750, Denmark  
[www.sennheiser.com](http://www.sennheiser.com)

Printed in China, Publ. 05/16, A01

## 4 Open the Sennheiser software



1. Click the small arrow in the taskbar.



2. Click the "Sennheiser Audio" logo.



Change settings for EQ, Noise Reduction and Sidetone. See more in the User Guide.

## 5 Change sound settings - see User Guide



[www.sennheiser.com/gaming-downloads](http://www.sennheiser.com/gaming-downloads)



Manufactured under license from Dolby Laboratories. Dolby and the double-D symbol are trademarks of Dolby Laboratories.